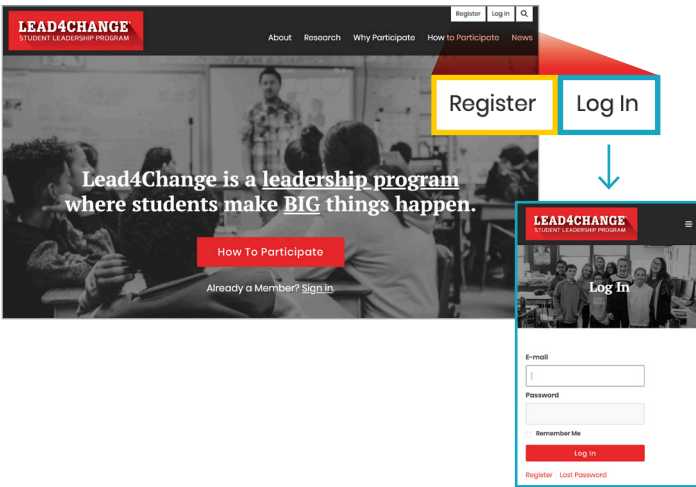


STEP 1 REGISTER/LOG IN

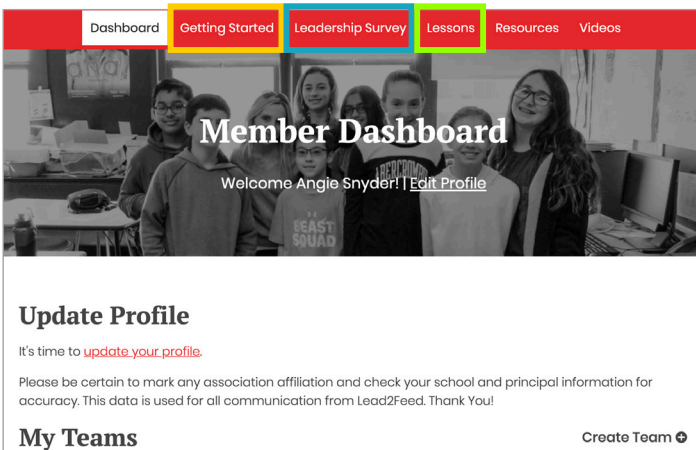


LEAD4CHANGE.ORG

REGISTER and create your member account.

Each time you return to Lead4Change.org, **LOG IN**.

STEP 2 MEMBER DASHBOARD



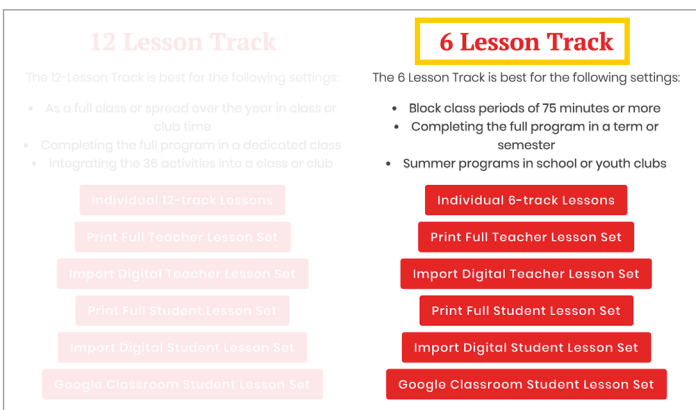
On your Member Dashboard, you can always click on **GETTING STARTED** to finish the steps and helpful links to participate.

STUDENT SURVEY

Before you begin the Lessons, click **LEADERSHIP SURVEY** and follow the steps to have students take the pre-program survey. Your students' responses will be available on this page specifically for you to view and download.

You are ready to grab the Lessons and begin! Click **LESSONS** and make the choices that work best in your setting.

STEP 3 LESSONS



CHOOSE YOUR TRACK—12 or 6 lessons—then choose the lessons in the format you prefer:

> Print > Editable PDFs > Google Docs

You can also choose to access the lessons individually or as a full set.

STEP 3 LESSONS (CONTINUED)

SO WHAT?

Teamwork is going to be so important throughout life, and as you work together to complete your Lead4Change project. Remember to always bring your strengths to every activity you complete together and work to build up your teammates. Understanding the issues will also be important so you can make wise decisions and speak intelligently with others. It is also the first step towards writing a Big Goal and selecting a project idea.

NOW WHAT?

- Turn in to your teacher:**
- ▶ Visual representation of team strengths
 - Use the list of team skills you discussed in activity one and make a visual representation of these skills defining a team. This can be a drawing, photo, graph ... anything that shows how your ideal team will work together.
- Add to your Challenge entry:**
- ▶ Name of issue you selected to address in project

NOW GO CHOOSE!

At the end of each Lesson, the **NOW WHAT?** Box shows exactly what student teams will turn-in to show their work is complete. It also shows what to insert into the Challenge entry.

SUBMISSION CHECKLIST

Review the submission checklist with your teacher. Remember there is a due date for the submission. Schedule a time for your team to read through the documentation for the six lessons to ensure that everything required is included and accurate.

- LESSON 1:**
No submission
- LESSON 2:**
 Name of the issue addressed in this project.
- LESSON 3:**
 Social Media post of Big Goal
 Team name, slogan, mascot
- LESSON 4:**
 Detailed Action plan
 Agreed upon elevator speech
- LESSON 5:**
 Ad created to promote your project
 Barriers Chart
 Project highlights and final outcomes
- LESSON 6:**
 Story Video (Optional)
 Team Lifeline



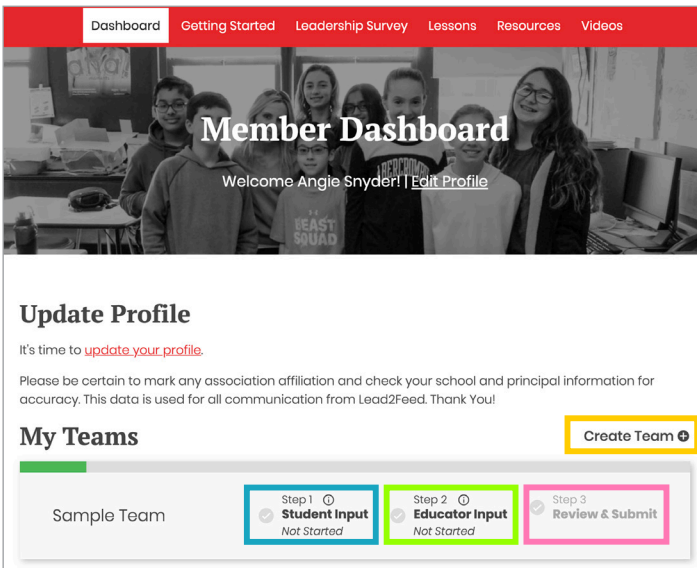
SUBMISSION REQUIREMENTS

- In order to submit your entry to the Lead4Change Challenge, please be sure:
- ▶ Your team is comprised of three or more students (there is no limit to the size of the team).
 - ▶ A teacher or adult advisor has worked with your team (a teacher or adult advisor can work with more than one team).
 - ▶ The final submission includes all of the activities listed to the left.

In the last lesson, the **PROJECT SUBMISSION CHECKLIST** provides a simple list of all items for the Challenge Entry. This is also a great tool for grading students' work.

TIP: The work your students are doing in the lessons is exactly what goes into your Challenge entry. The Lead4Change Challenge is a recap of the work completed.

STEP 4 CHALLENGE ENTRY



You may enter your students' work in the **Lead4Change Challenge** for an opportunity to win up to \$10,000 for your school or charity.

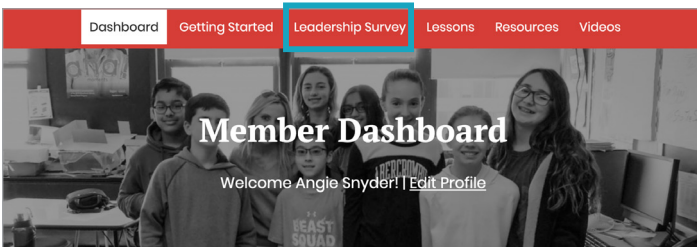
On you Member Dashboard click on **CREATE TEAM** to begin.

For each student team, you can share a link to the **STUDENT INPUT** form for student teams to input their work.

You can complete the **EDUCATOR INPUT** form.

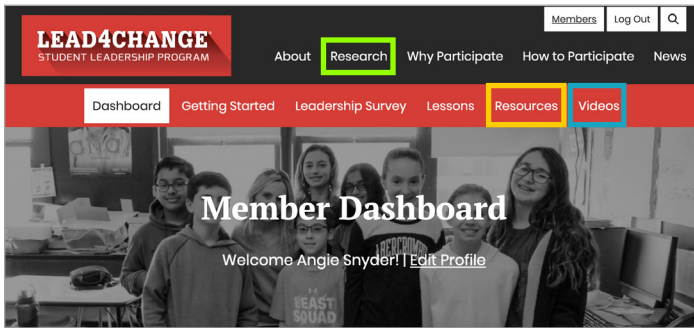
Once both parts are submitted, the **REVIEW & SUBMIT** form will show your full entry. Please review, edit and then submit to the Lead4Change Challenge.

STEP 5 FINAL STUDENT ASSESSMENT



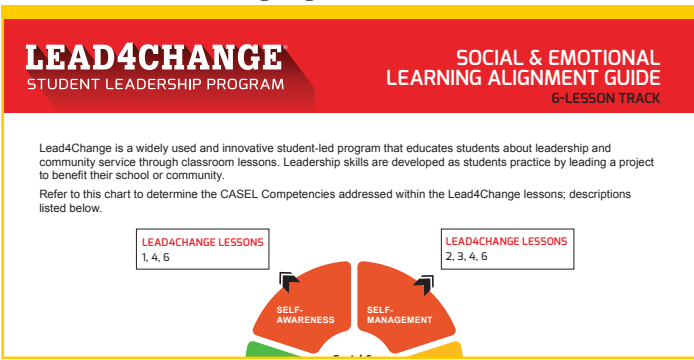
When the lessons are complete, return to the **LEADERSHIP SURVEY** page. Share the post-program survey link for students to assess their skills after participating in Lead4Change. Your students' results will appear on this page for you to view and download.

RESOURCES



The **RESOURCES** page has many guides to show how the lessons align with Education Standards and integrate into core subjects and pathways like CTE. You can find lesson-by-lesson alignment to SEL, PBL, Literacy and other major standards. Also find ways to integrate the lessons into your class, club or advisory time with clear steps and practices.

→ **Resource Example: Social & Emotional Learning Alignment Guide**



The **VIDEO** page has all of the lesson videos—either in a downloadable PDF or individual videos for viewing. You will also find other testimonial videos here.

Lead4Change has a national, full year research study which shows the proven outcomes of the program in 78 areas of Social Emotional Learning and Leadership. See the data and download the reports from our **RESEARCH** page.

→ **Video Library**



→ **Research**

